



# GAT MONTHLY MEMBERSHIP PROGRESS REPORT

Results as of: 5/31/2021

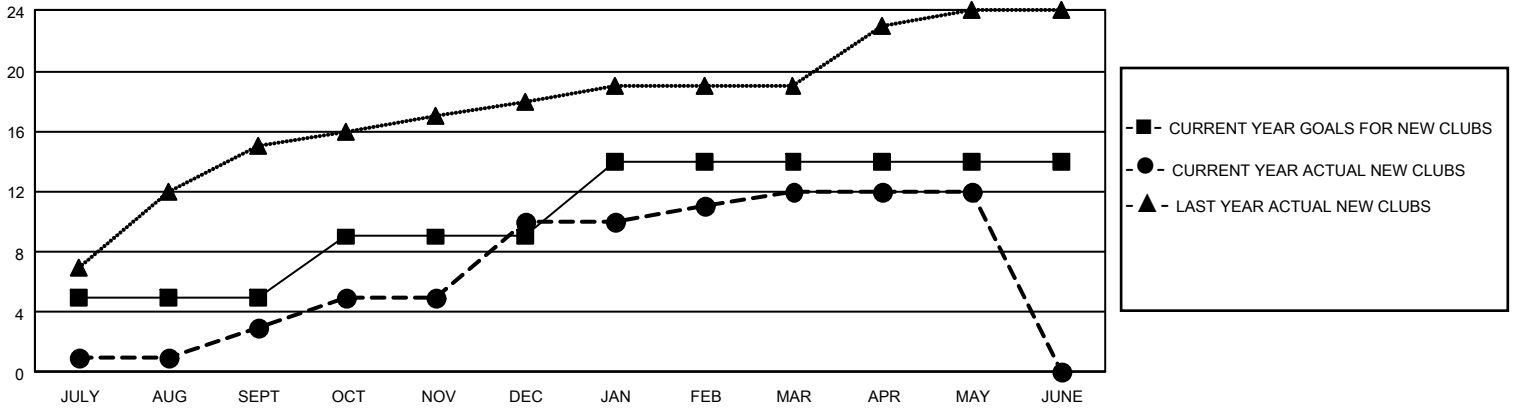
## GAT Constitutional Area 5 - MD 300 Taiwan

REPORT DOES NOT INCLUDE CLUBS IN UNDISTRICTED AREAS.

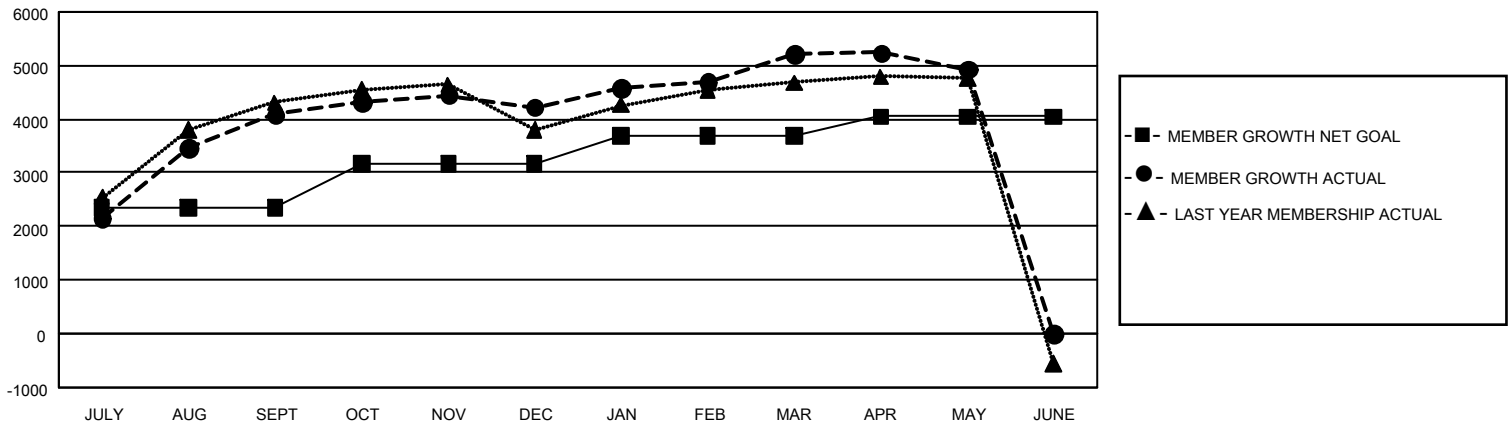
Clubs			
RESULTS FOR 2020-2021			
QUARTER	NEW CLUB GOAL	NEW CLUBS	DROPPED CLUBS
JULY/AUG/SEPT	15	3	5
OCT/NOV/DEC	12	7	2
JAN/FEB/MAR	15	2	5
APR/MAY/JUNE	0	0	0

Members			
RESULTS FOR 2020-2021			
QUARTER	MEMBER GROWTH NET GOAL	MEMBER GROWTH ACTUAL	DROPPED MEMBERS ACTUAL (including transfers)
JULY/AUG/SEPT	2345	5,392	931
OCT/NOV/DEC	814	1,452	1,213
JAN/FEB/MAR	525	1,339	239
APR/MAY/JUNE	360	158	394

GOALS AND ACTUAL NEW CLUBS CUMULATIVE



GOALS AND ACTUAL MEMBERS CUMULATIVE



DROPPED CLUBS: 12	1,089 CLUBS OF 1,211 ADDED 1 OR MORE NEW MEMBERS	<u>GENDER DISTRIBUTION</u>	
<u>DROPPED MEMBERS</u>		MALE	32,556 (66.84%)
DECEASED	84	FEMALE	16,151 (33.16%)
CLUB CANCELLED	65	TOTAL FAMILY UNIT MEMBERS 9,618	
OTHER	2,629		
TOTAL	2,778		
<a href="#">CLICK HERE FOR CUMULATIVE MEMBERSHIP DATA</a>		FAMILY MEMBERS PAYING HALF DUES 5,825	